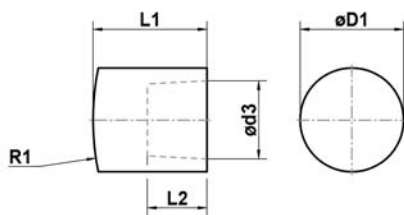


# ELEKTRODENKAPPEN | Electrode caps

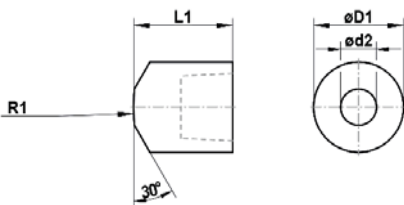
## Elektrodenkappen nach ISO 5821 | Electrode caps according to ISO 5821

### Form A



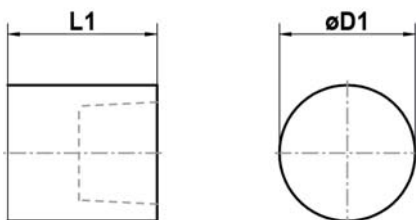
D1h11	d2	d3	l1	l2+0.5/-0	e	R1	R2
13		10	18	8		32	
16		12	20	9,5		40	
20		15	22	11,5		50	

### Form B



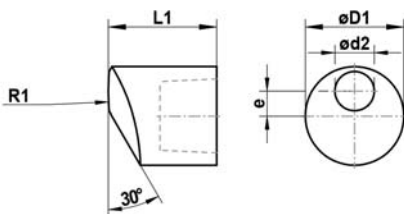
D1h11	d2	d3	l1	l2+0.5/-0	e	R1	R2
13	5	10	18	8		32	
16	6	12	20	9,5		40	
20	8	15	22	11,5		50	

### Form C



D1h11	d2	d3	l1	l2+0.5/-0	e	R1	R2
13		10	18	8			
16		12	20	9,5			
20		15	22	11,5			

### Form D

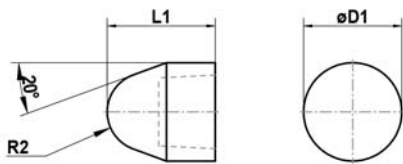


D1h11	d2	d3	l1	l2+0.5/-0	e	R1	R2
13	5	10	18	8	3	32	
16	6	12	20	9,5	4	40	
20	8	15	22	11,5	5	50	

# ELEKTRODENKAPPEN | Electrode caps

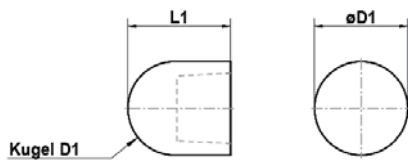
## Elektrodenkappen nach ISO 5821 | Electrode caps according to ISO 5821

### Form E



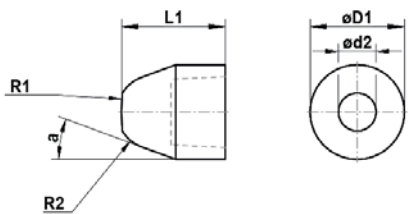
D1h11	d2	d3	l1	l2+0.5/-0	e	R1	R2
13		10	18	8			5
16		12	20	9,5			6
20		15	22	11,5			8

### Form F



D1h11	d2	d3	l1	l2+0.5/-0	e	R1	R2
13		10	18	8			
16		12	20	9,5			
20		15	22	11,5			

### Form G



D1h11	d2	d3	l1	l2+0.5/-0	e	R1	R2
13	5	10	18	8		32	5
16	6	12	20	9,5		40	6
20	8	15	22	11,5		50	8